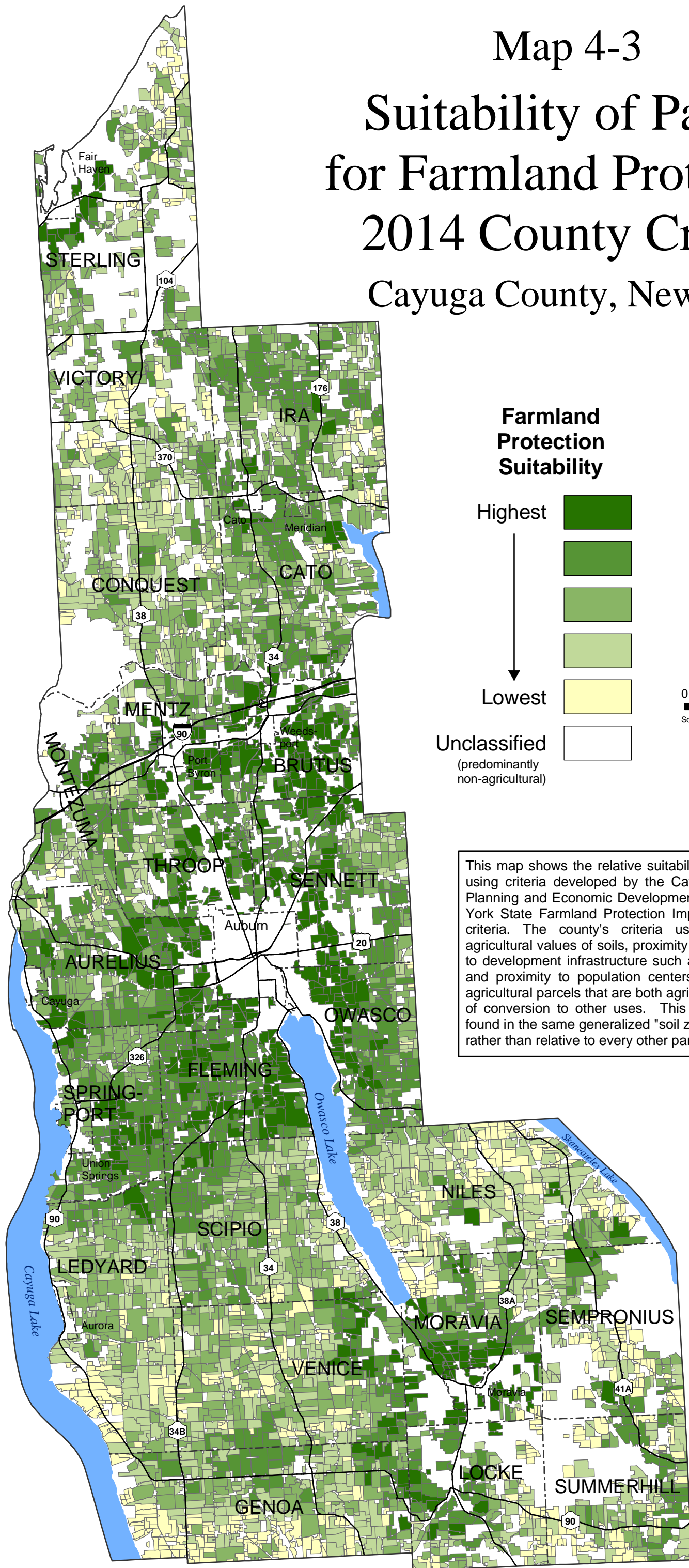


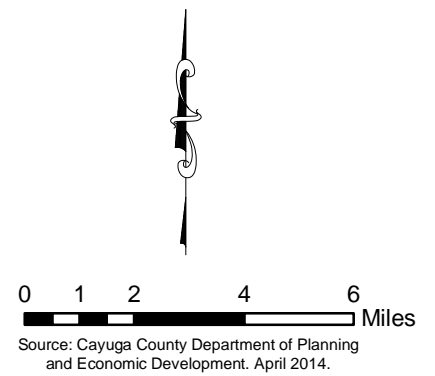
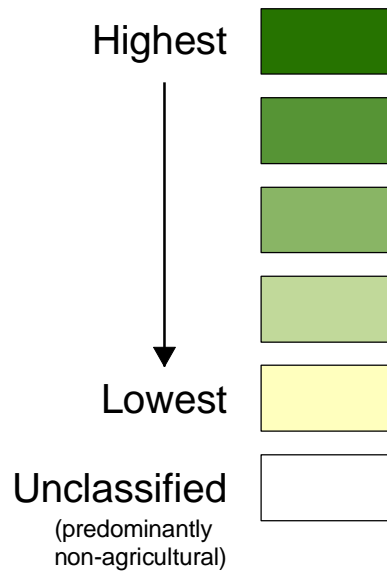
Map 4-3

Suitability of Parcels for Farmland Protection: 2014 County Criteria

Cayuga County, New York



Farmland Protection Suitability



This map shows the relative suitability of farmland for protection using criteria developed by the Cayuga County Department of Planning and Economic Development, based in part on the New York State Farmland Protection Implementation Grant Program criteria. The county's criteria uses a combination of the agricultural values of soils, proximity to protected lands, proximity to development infrastructure such as roads and water districts, and proximity to population centers, among others, to identify agricultural parcels that are both agriculturally valuable and at risk of conversion to other uses. This analysis also ranks parcels found in the same generalized "soil zones" relative to one another rather than relative to every other parcel in the county.

