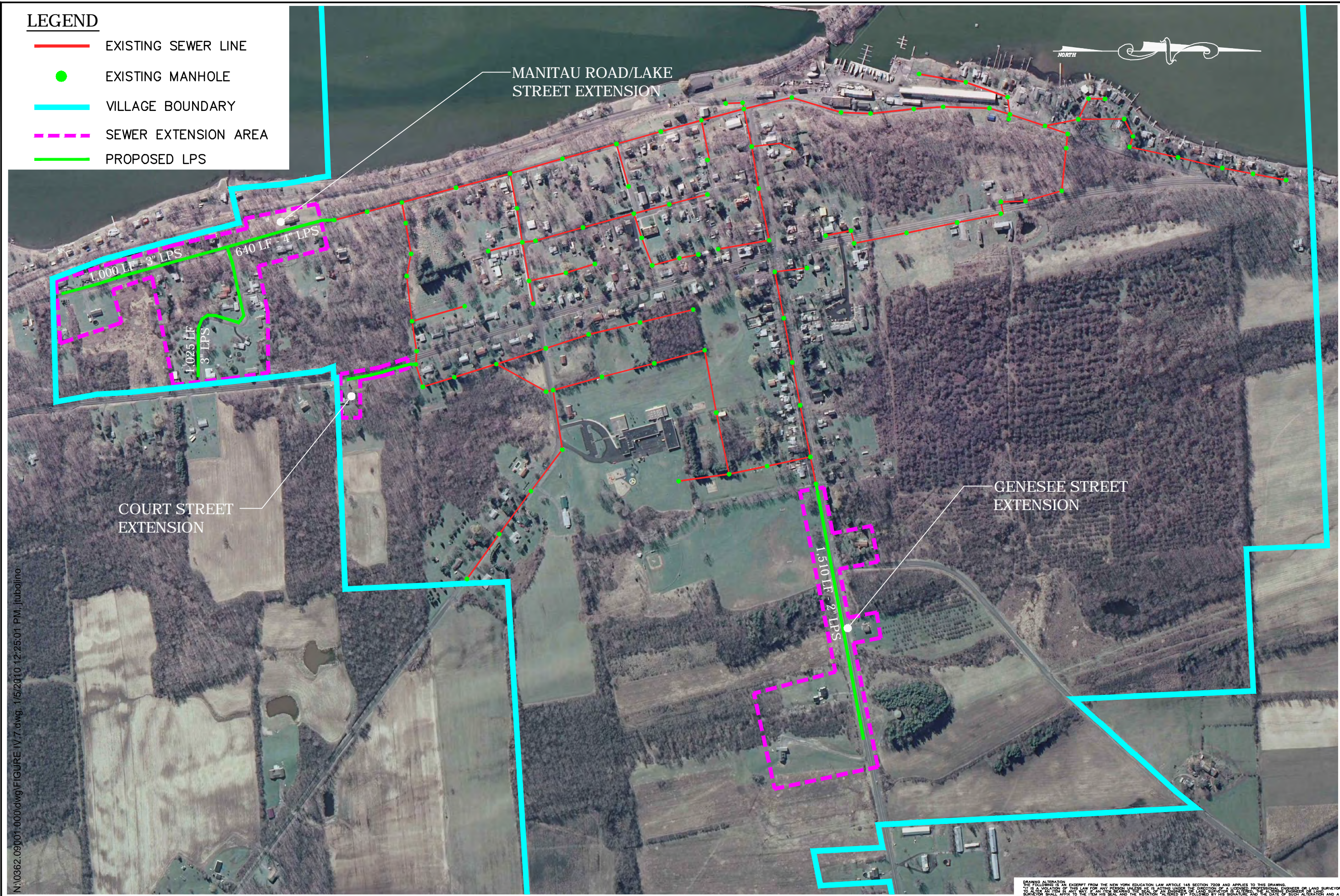


LEGEND

- EXISTING SEWER LINE
- EXISTING MANHOLE
- VILLAGE BOUNDARY
- - - SEWER EXTENSION AREA
- PROPOSED LPS



N:\0362.09\001.000.dwg\FIGURE IV.7.dwg, 1/5/2010 12:25:01 PM, jtubolino

DRAWING ALTERATION
THE FOLLOWING IS AN EXCERPT FROM THE NEW YORK EDUCATION LAW ARTICLE 145 SECTION 2209 AND APPLIES TO THIS DRAWING.
THIS IS A NOTATION OF THIS LAW FOR ANY PERSON UNLESS HE IS ACTING UNDER THE SUPERVISION OF A LICENSED PROFESSIONAL ENGINEER OR LAND SURVEYOR
TO ALTER AN ITEM IN ANY WAY IF AN ITEM BEARING THE SEAL OF AN ENGINEER OR LAND SURVEYOR IS ALTERED. THE ALTERING PERSON'S NAME, LICENSE NUMBER AND A
SPECIFIC DESCRIPTION OF THE ALTERATION.

No.	Revisions and Descriptions	By	Date

Project Title:
VILLAGE OF GAYUGA - JOINT WWTP, PUMP STATION & FORCEMAIN IMPROVEMENTS & SEWER EXTENSIONS
GAYUGA COUNTY, NEW YORK

Drawing Title:
VILLAGE SEWER EXTENSIONS

Drawn By: **HT**
Checked By: **BD/RTC**
Scale: **1" = 500'**
Date: **1/2010**

MRB group
Engineering, Architecture, Surveying, P.C.
2480 Browncroft Boulevard, Rochester, New York 14625 585-381-9250 FAX 585-381-1008
2750 Westinghouse Road, Suite 1, Horseheads, New York 14845 607-796-9330 FAX 607-796-6800
2392 Route 9, Mechanicville, New York 12118 518-899-2180 FAX 518-899-9842
www.mrbgroup.com

Figure No.
IV7

Project No.
036208002

Copyright © 2010 MRB Group, P.C. All Rights Reserved